

FINAL EXAM STUDY GUIDE CHOIR YEAR 3 – SEMESTER 2

MUSICAL TERMS I: General

TERM	DEFINITION
Balance	Correct levels of volume between sections and individuals
Blend	Matching of tone within sections and between sections
Con	With
Dominant	In the tonal system, the fifth degree of the major or minor scale
Intonation	Accuracy in pitch
Piu	More
Sempre	Always
Soli	Passage for all performers in a section
Timbre	Quality or color of tone
Tonic	In the major-minor tonal system, the main note of a key after which the key is named

KEY SIGNATURES:

Rules for finding Major Keys

The LAST FLAT is FA.

The LAST SHARP is TI.

No FLATS no SHARPS "Do" is always C. "C" no sharps, "C" no flats - Must be C Major

Order of Flats and Sharps

BEAD GCF

FCG DAEB

Be able to identify both Major and Minor Key Signatures in both Treble and Bass Clef with Flat and Sharp key signatures



Do = B Flat



Do = A Flat



Do = G



Do = B

Identify key signatures by number of sharps and flats

i.e. How many flats/sharps does F# Major have ? (6 sharps)

RHYTHMIC IDENTIFICATION:

Use rhythm examples to determine the correct counting for a rhythm in 2/4, 3/4, and 4/4 time signatures using rhythm counting.



1 2 3 1 2 3 1 2 3 + 1-2 3 1 2 3



1 2 3+4 + 1-2 3+4 1-2 3 4 e+a 1 2 3+4+ 1-2 3 4 1+2+ 3-4-1 2 3 4 1-2-3-4

**FINAL EXAM STUDY GUIDE
CHOIR YEAR 3 – SEMESTER 1**

Continued

IPA:

International Phonetic Alphabet

Identify **5 Basic IPA Vowels:**

[ɑ]

[ɛ]

[i]

[ɔ]

[u]

Translate IPA symbols to English words

Identify IPA vowel within an English word

[ful] = fool

[kwɛst] = quest

[sɒks] = socks

[kwɪn] = queen

IPA (continued):

Identify **5 Extended IPA Vowels:**

[o]

[æ]

[ɪ]

[e]

[ə]

Translate IPA symbols to English words

Identify IPA vowel within an English word

[k æ t] = cat [ɪt] = it

[g o] = go [ɔf əl] = awful

[s e] = say

Consonants:

Normal consonants (s, t, k, etc.)

[ʃ] = "sh" as in "**ship**" = [ʃɪp]

[θ] = "th" as in "**thin**" = [θɪn]

[dʒ] = "dj" as in "**George**" or "**Jello**"

[ŋ] = "ng" as in "**sing**"

[tʃ] = "ch" as in "**choose**"

INTERVAL DISTANCE (QUANTITY and QUALITY):

Steps by specific interval.

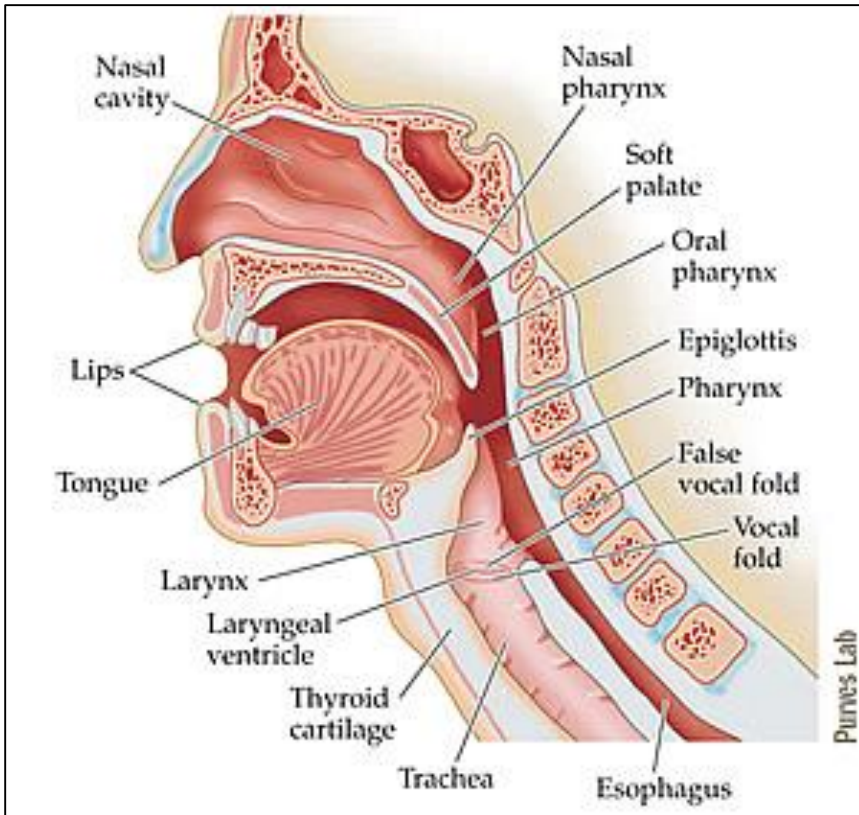
	diminished	minor	major	perfect	augmented
2nd		1		2	3
3rd	2	3	4		5
4th	4			5	6
5th	6			7	8
6th	7	8	9		10
7th	9	10	11		12

**FINAL EXAM STUDY GUIDE
CHOIR YEAR 3 – SEMESTER 1**

Continued

VOCAL TECHNIQUE:

Identify and label basic anatomical components of the vocal mechanism including **vocal folds, larynx, pharynx, oral pharynx, nasal pharynx, and soft palate.**



AURAL IDENTIFICATION:

Triads:

- Major Triad
- Minor Triad
- Augmented Triad
- Diminished Triad

Scales:

- Major Scale
- Natural Minor Scale
- Harmonic Minor Scale
- Melodic Minor Scale

Rhythmic Identification:

Match the written rhythm to the aural example

Melodic Identification:

Match the written melody to the aural example

Aural Choral Technique Identification:

From a played recording identify the following common vocal technique errors:

- Sharp Singing
- Flat Singing
- Strident/Pushed Singing
- Breathly Singing
- Nasal Singing
- Swallowed Singing