

# YEAR 2 – SEMESTER 1

## BAND FINAL EXAM STUDY GUIDE

FINAL EXAM IS WORTH 20% OF SEMESTER GRADE

### PERFORMANCE SECTION:

**WEIGHTING: 50% OF EXAM SCORE**

- ILMEA Scale sheet first 4 lines for Symphony Band quarter = 40
- IIMEA Scale sheet first 4 and last 4 lines for Wind Symphony quarter = 40.
- ILMEA Scale sheet all lines for Wind Ensemble quarter = 40



Scale Testing will occur Friday, 12/15/2017 during your band class.

### WRITTEN SECTION:

**WEIGHTING: 50% OF EXAM SCORE**

### FINAL EXAM STUDY GUIDE YEAR 2 – SEMESTER 1


#### MUSICAL TERMS & SYMBOLS I: Dynamics & Expression

TERM	SYMBOL		DEFINITION
Crescendo	<i>cresc.</i>		Gradually louder
Decrescendo	<i>decresc.</i>		Gradually softer
Diminuendo	<i>dim.</i>		Gradually softer
Pianissimo	<i>pp</i>		Very softly
Piano	<i>p</i>		Softly
Mezzo Piano	<i>mp</i>		Moderately soft
Mezzo Forte	<i>mf</i>		Moderately loud
Forte	<i>f</i>		Full, loud
Fortissimo	<i>ff</i>		Very full, loud
Forte-piano	<i>fp</i>		Loud followed by soft
Sforzando	<i>sfz</i>		Sudden accent
Niente	<i>n</i>		Nothing, barely audible

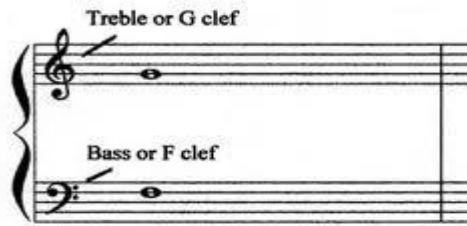
#### MUSICAL TERMS & SYMBOLS II: Articulation & Style

TERM	SYMBOL	DEFINITION
Accent	>	Emphasis on attack of note
Marcato	^	Marked, emphasized
Staccato	( . )	Detached, separated
Legato		Smooth, connected
Tenuto	—	Sustained, full value
Cantabile		In a singing or vocal style
Dolce		Gently, sweetly
Espressivo		Expressive, with expression
Pesante		Heavy, weighty, with emphasis
Slur		Connects two or more different notes indicating they should be played or sung in one breath or articulation
Tie		Connects notes of the same pitch indicating the rhythmic values should be added together

## MUSICAL TERMS & SYMBOLS III: Tempo

TERM	SYMBOL	DEFINITION
Largo	mm. 60	Broad
Andante	mm. 80	Moderately slow, like a walking speed
Moderato	mm. 100	Moderate
Allegro	mm. 120	Cheerful, fast
Ritardando	<i>rit.</i>	Gradually slower
Accelerando	<i>accel.</i>	Gradually faster
Vivace	mm. 140	Lively, brisk, i.e. allegro or faster
Presto	mm. 160	Very fast, i.e. faster than allegro
Rallentando	<i>rall.</i>	Slowing down
A Tempo		Return to the original tempo
Rubato		The expressive alteration of rhythm or tempo
Fermata		Prolonged beyond its normal duration

## NOTE IDENTIFICATION: Treble (G) & Bass (F) Clefs



**Double Sharp**

-raises a pitch by 2 half steps or 1 whole step

**Double Flat**

-lowers a pitch by 2 half steps or 1 whole step

## FINAL EXAM STUDY GUIDE YEAR 2 – SEMESTER 1 Continued

**SCALES:** To build a Major scale, we connect two tetrachords with a Whole Step in between. We build the minor scale based off the 6<sup>th</sup> note of the Major scale. OR identify out what the major key signature is.

Major -                    \_\_\_\_\_ w \_\_\_\_\_ w \_\_\_\_\_ h \_\_\_\_\_ W \_\_\_\_\_ w \_\_\_\_\_ w \_\_\_\_\_ h \_\_\_\_\_

Natural Minor -                    \_\_\_\_\_ w \_\_\_\_\_ h \_\_\_\_\_ w \_\_\_\_\_ w \_\_\_\_\_ h \_\_\_\_\_ w \_\_\_\_\_ w \_\_\_\_\_

(or does the scale begin on the 6<sup>th</sup> note of the major scale and use the major scale key signature?)



Eb Major or Eb minor? If you don't know, follow these steps:

1. How many sharps or flats? \_\_\_\_\_
2. Using that information, what is the name of the key signature? \_\_\_\_\_
3. Respell the scale out here:

\_\_\_\_\_



What is the above scale? F major or F minor?

**KEY SIGNATURES:** Identify key signatures in Major keys in both Treble & Bass Clef

→ Flats      B      E      A      D      G      C      F      ← Sharps

C Major   G Major   D Major   A Major   E Major   B Major   F# Major   C# Major

F Major   Bb Major   Eb Major   Ab Major   Db Major   Gb Major   Cb Major

**INTERVALS: Quantity (Distance)**

- Starting with the bottom note, count all the lines and spaces up to the top note.

Unison    2nd    3rd    4th    5th    6th    7th    8th

**ENHARMONICS**

C#	D#	F#	G#	A#		
Db	Eb	Gb	Ab	Bb		
Bx	Fbb	Ex		Cbb		
C	D	E	F	G	A	B
B#	Cx	Fb	E#	Fx	Gx	Cb
Dbb	Ebb	Dx	Gbb	Abb	Bbb	Ax

**RHYTHMIC IDENTIFICATION**

Students should be able to determine the correct counting for a rhythm in the following time signatures.

C	C	2	2/4	3/4	4/4	6/8
---	---	---	-----	-----	-----	-----

