

YEAR 1 – SEMESTER 1

BAND FINAL EXAM STUDY GUIDE

FINAL EXAM IS WORTH 20% OF SEMESTER GRADE

PERFORMANCE SECTION:

WEIGHTING: 50% OF EXAM SCORE



- IMEA Scales: First 4 Lines of your ILMEA Scale Sheet
- Quarter note = 40 beats per minute
- You will be assessed by smart music for right notes and rhythms.

Scale Testing will occur Friday, 12/15/2017 during your band class.

WRITTEN SECTION:

WEIGHTING: 50% OF EXAM SCORE

MUSICAL TERMS & SYMBOLS I: Dynamics & Expression

TERM	SYMBOL	DEFINITION
Crescendo	<i>cresc.</i> 	Gradually louder
Decrescendo	<i>decresc.</i> 	Gradually softer
Diminuendo	<i>dim.</i>	Gradually softer
Pianissimo	<i>pp</i>	Very softly
Piano	<i>p</i>	Softly
Mezzo Piano	<i>mp</i>	Moderately soft
Mezzo Forte	<i>mf</i>	Moderately loud
Forte	<i>f</i>	Full, loud
Fortissimo	<i>ff</i>	Very full, loud
Forte-piano	<i>fp</i>	Loud followed by soft
Sforzando	<i>sfz</i>	Sudden accent

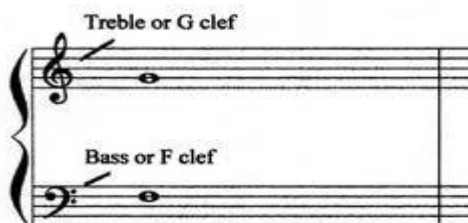
MUSICAL TERMS & SYMBOLS II: Articulation & Style

TERM	SYMBOL	DEFINITION
Accent	>	Emphasis on attack of note
Marcato	^	Marked, emphasized
Staccato	(.)	Detached, separated
Legato		Smooth, connected
Tenuto	—	Sustained, full value

MUSICAL TERMS & SYMBOLS III: Tempo

TERM	SYMBOL	DEFINITION
Largo	mm. 60	Broad
Andante	mm. 80	Moderately slow, like a walking speed
Moderato	mm. 100	Moderate
Allegro	mm. 120	Cheerful, fast
Ritardando	<i>rit.</i>	Gradually slower
Accelerando	<i>accel.</i>	Gradually faster

NOTE IDENTIFICATION: Treble (G) & Bass (F) Clefs



Ledger Lines extend the staff in either direction.



TIME SIGNATURE & SCORE ORDER:

Time Signature

TOP NUMBER – tells you the number of beats per measure

BOTTOM NUMBER – tells you the note value that receives the beat

WOODWINDS	BRASS & PERCUSSION
Piccolo	Trumpet/Cornet
Flute	F Horn
Oboe	Trombone
Bassoon	Euphonium/Baritone
Clarinet	Tuba
Bass Clarinet	Timpani
Alto Saxophone	Mallet Percussion (Bells/Xylo/Vibes/Marimba)
Tenor Saxophone	Battery Percussion (SD/BD/CC/SC)
Baritone Saxophone	Auxiliary Percussion (All others)

FINAL EXAM STUDY GUIDE

YEAR 1 – SEMESTER 1

Continued

SCALES: To build a scale, we connect two tetrachords with a Whole Step in between.



G Major (#) / C Major () / F Major (b)

G Major G A B C D E F# G

C Major C D E F G A B C

F Major F G A Bb C D E F

KEY SIGNATURES: Students need to be able to list the order of sharps and flats

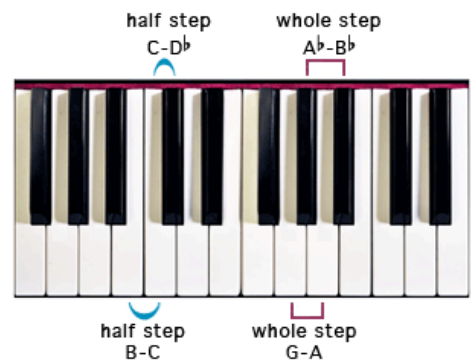
→ Flats B E A D G C F ← Sharps

INTERVALS: Whole Step vs. Half Step

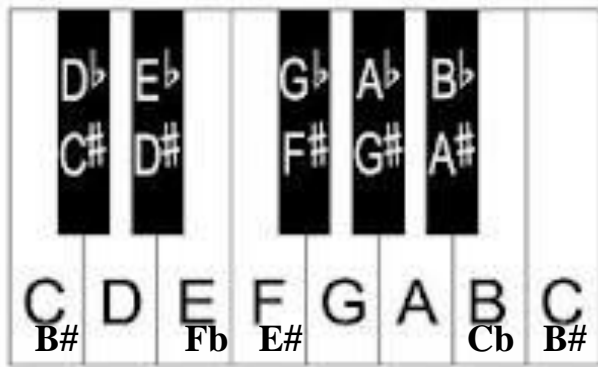
Half Step (H) = 1 semitone

(the distance from one pitch on the keyboard to the next pitch)

Whole Step (W) = 2 semitones or 1 tone



IDENTIFY ENHARMONICS



RHYTHMIC IDENTIFICATION

Students should be able to determine the correct counting for a rhythm in the following time signatures.

C	C	2 2	2 4	3 4	4 4	6 8
----------	----------	----------------------	----------------------	----------------------	----------------------	----------------------